

**Fast responding palm sized Spectrometer and Dose Rate Meter will instantly measure and identify any material for the presence of radioactivity**

- Light weight and palm sized
- Large Nuclide Isotope library
- Simplified use and easy to understand operation
- Manual or Automatic operation modes
- Automatic Energy Stabilization (no check source required)
- RadView software for integration



# MSPEC

SPECTROSCOPIC PERSONAL RADIATION DETECTOR (WITH OPTIONAL NEUTRON DETECTION)

## Locate and Identify Specific Isotopes

MSpec palm sized gamma ray spectrometer utilizes a Sodium doped Cesium Iodide Crystal with high signal to noise ratio PMT and state-of-the-art electronics for the most accurate results. The MSpec scans suspect material and quickly analyzes too determine what nuclide isotope is present and then categorizes the result as Medical, Industrial, Natural Occurring Radioactive Material (NORM), or Special Nuclear Material (SNM)

## Operator Friendly

The MSpec has two modes a user may choose from:

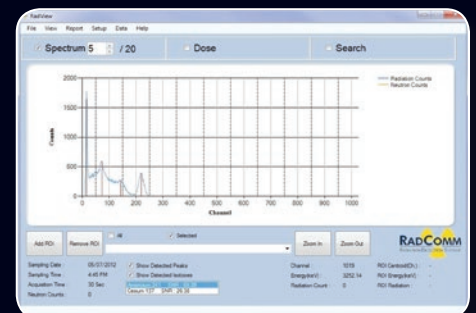
Automatic is the quickest and easiest to use mode. Set in Automatic the MSpec will search for and detect radioactive material. Once in range the instrument will automatically begin isotopic identification and display the results.

Manual mode gives the user greater control including the ability for longer scan times which increases the accuracy of results. This is especially important if there are multiple isotopes present in the same sample.

## RadView Software

RadComm's exclusive RadView software interfaces with a user's PC and enables a user to see detailed results of recorded scans in a Histogram format. Each result can be edited with comments, saved as a PDF and archived for future reference or email compatibility.

Meets ANSI 42.48:2008 American National Standard Performance Requirements for Spectroscopic Personal Radiation Detectors (SPRDs) for Homeland Security



## Size

- Detector Dimensions:  
4.75" L(12.1cm) x 2.5" W(6.4cm) x 1.22" H(3.1cm)
- Instrument weight: 0.44 lbs (200 g)

## Electronics/Mechanical

- Easy to operate 5 button keypad
- Audio & Visual Alarm with Vibration
- Micro Controller based architecture
- Sodium doped Cesium Iodide crystal (CsI(Na))  
½" x 1 ¾" (13mm x 38mm)
- Internal Lithium Ion Battery with charging LCD indicator
- Battery life up to 10 hours
- Battery recharging time up to 4 ½ hours using wall charger or PC USB

## Environmental

- Operating Temperature: 14 °F(-10°C) to +113°F(+45°C)
- Shock Resistance: up to 1 meter drop test

## Display

- Viewing Area: 2 ½" L (6.35cm)
- LCD with backlight 128 x 128 resolution
- Backlight auto-off: 180 seconds with push button auto-on
- Battery level indicator
- Warning Messages: move closer; move away; high dose rate move away; cps exceeds threshold; dose rate above threshold; stabilization off no ID; stabilization required; re-calibration required; memory is full; neutrons detected (with optional Neutron Detector)
- Real-Time Spectrum display shows accumulated spectrum

## MSpec & RadView Software

- Menu Driven User Interface
- LCD with backlight 128 x 128 resolution
- Menu Feature Selection Controlled by a Five Push Button Actuation
- Selectable Features:  
Automatic or Manual Modes, Stabilization mode, CPS Alarm Threshold, Dose Alarm Threshold, Identification Time
- PC Configurable: Reports, Date & Time, Units of Measure, Language, etc.
- Selectable Displayed Units - CPS, R/hr, Sv/hr

## Response/Sensitivity

- Energy Range: 30 KeV – 3.0 MeV (Gamma)
- Dose Rate Range:  
From 0.01 µSv/hr to 10.0 mSv/hr
- Resolution: 9% or better at 662 KeV
- Gamma spectrum: 1024 channels
- Optional Neutron Detector Sensitivity: 0.6 CPS/NV
- Supports Auto Stabilization - Range 41°F (5°C) to 131 °F (55°C)



Real-Time Spectrum display



### Corporate Head Office

Scott Aikin  
Saikin@radcommsystems.com  
Jeff Adams  
jadams@radcommsystems.com  
2931 Portland Drive  
Oakville, ON Canada L6H 5S4  
Tel. +1 (905) 829-8290  
Toll Free: 1 (800) 588-5229  
Fax: +1 (905) 829-1406

### USA

Joshua Hunter  
jhunter@radcommsystems.com  
602 E. Lincolnway Ave.  
Valparaiso, IN USA 46383  
Tel. +1 (773) 680-8430  
Toll Free: 1 (800) 588-5229  
Fax: +1 (219) 510-5764

### Europe

Wim van Hove  
wim.van.hove@radcommeurope.com  
Watertorenweg 32, 2230 Herselt, Belgium  
Tel. +32.14.75.02.13 Fax: +32.14.75.02.16

### China

Zhenhau Wang  
wang.zhenhau@ehc-global.com  
212-215 Malu Industrial Park, No. 58  
Chen Bao Rd., Jiading  
Shanghai, 201801, China  
Tel. +86-21-69153031  
Fax: +86-21-69153231

### Latin America

Eduardo Ballesteros  
analiticacontrol@prodginy.net.mx  
Amatista No.27, El Pedregal  
Atizapan de Zaragoza, 52948, Estado De Mexico  
Tel: (52) 55 5077 4633/(52) 55 3615 4910

### Black Sea

Osman Tureyyen  
metkim@metkim.com  
Kavacik, Onarimli Sokak  
No 9 Altay Han  
Daire: 8 Beykoz, Istanbul, Turkey  
Tel. +90 (216) 425-1412  
Fax: +90 (216) 425-1432

### India

Neelakshi Bhargava  
neelakshi@radcommsystems.co.in  
1 Radhey Shyam Park, Parwana Road  
Delhi 110051 India  
Tel. +91-971-767-1924  
Fax: +91-852-707-7118